

# Printware

A DIVISION OF VANGUARD GRAPHICS INTERNATIONAL

## Cutter Replacement with Punch

**Summary:** Remove and replace a defective cutter.

**Applicable Products:** PlateStream SC & SCX with integrated punch option

**Tools/Parts Required:** Allen Wrench Set

### STEP 1 – REMOVING THE CUTTER POWER CABLE

1. Turn off power and unplug the PlateStream.
2. Remove the back panel on the rear of the platesetter.
3. Open the top cover, lift up the marker.
4. Locate the Systems Board mounted on the back of the frame and disconnect the cutter power from the Systems Board PCA.

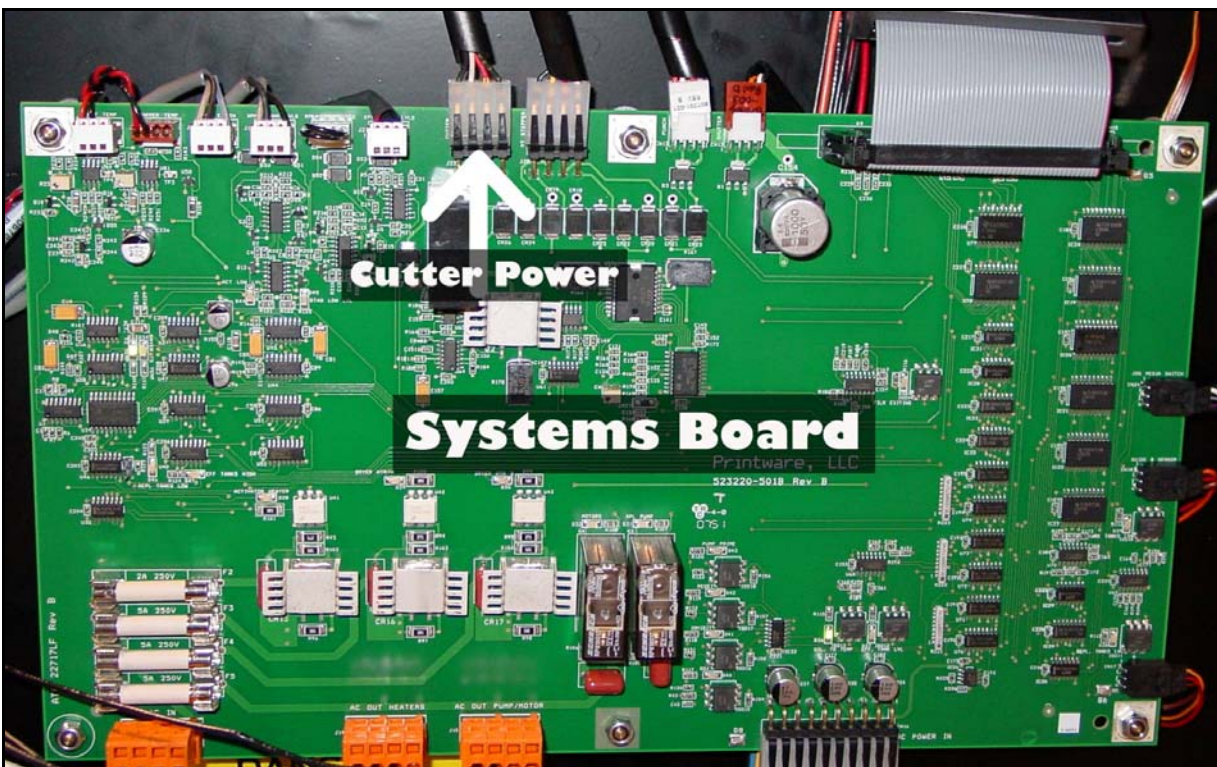
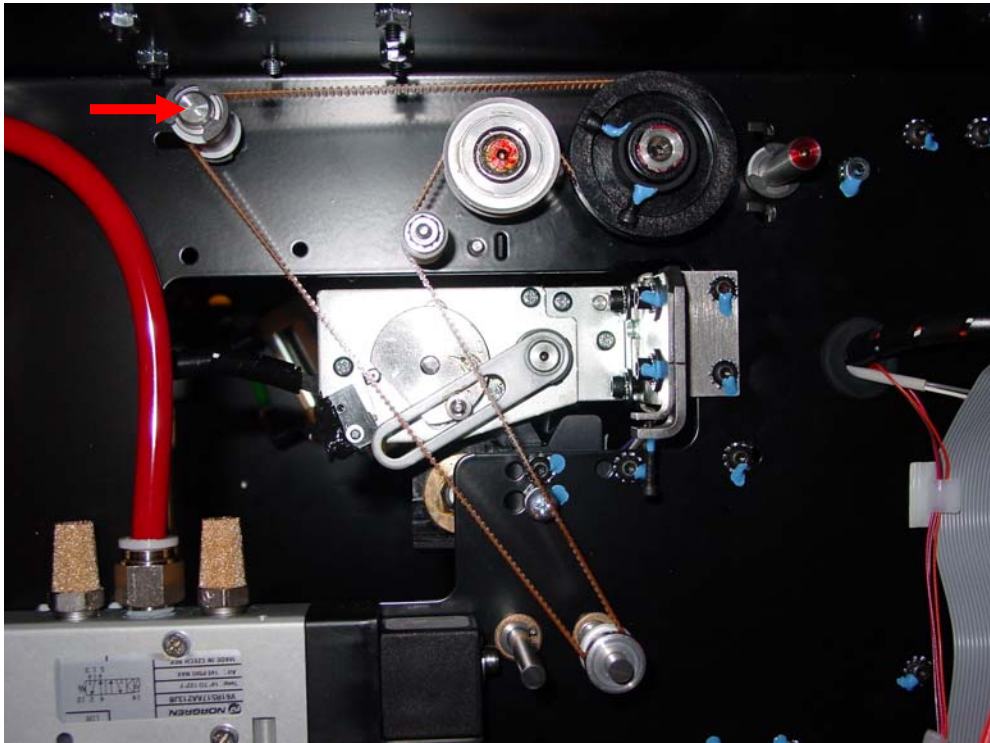


Figure 1 – Cutter Power Location on Systems Board

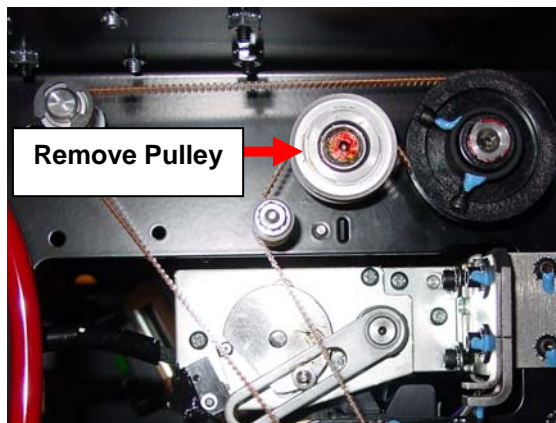
**STEP 2 – REMOVING THE 2<sup>ND</sup> PINCH ROLLER**

1. The traction control belt needs to be removed. It is located in the upper rear of the platesetter and is an orange belt.
  - a. Loosen from the front of the Platestream and slide adjustable screw over to allow enough slack to remove the belt.



**Figure 2 – Slide Adjustable Screw to Allow Removal of Traction Control Belt**

2. Remove pulley, E-clip and bushing from non-operator side of 2<sup>nd</sup> pinch roller.



**Figure 3 – Slide Pulley off Shaft of 2<sup>nd</sup> Pinch Roller Shaft**



**Figure 4 – Remove E-Clip and Bushing from**

- Slide the 2<sup>nd</sup> pinch roller towards the operator side to access and remove the E-clip from the shaft much easier. Once they are removed you can pull the pinch roller from the imager.

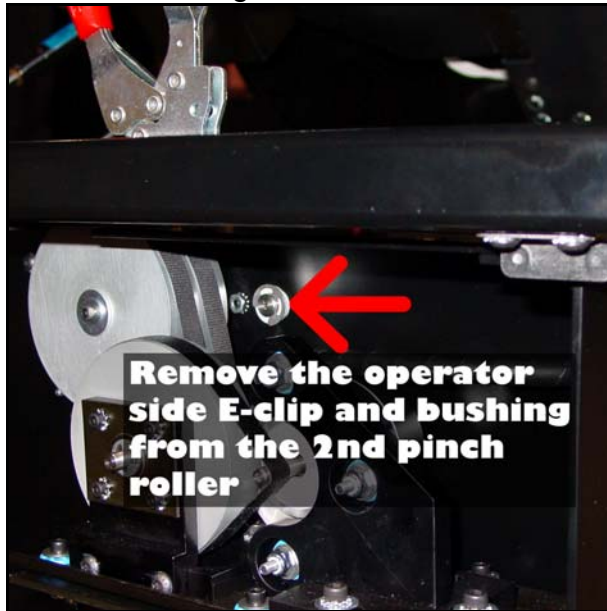


Figure 5 – Pull E-clip and Bushing to Remove Roller

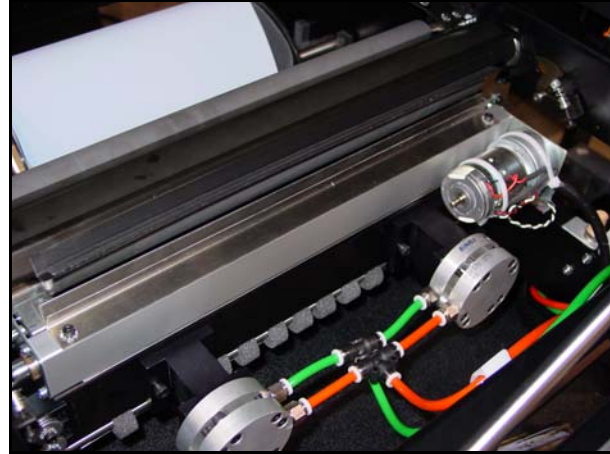


Figure 6 – Easy Access to Cutter without Roller

### STEP 3 – REMOVING THE CUTTER

- Locate and **loosen** the two Allen-head screws that secure the cutter to the cutter plate on the **operator side**.
- Locate and **remove** the two Allen-head screws that secure the cutter to the cutter plate on the **non-operator side**.

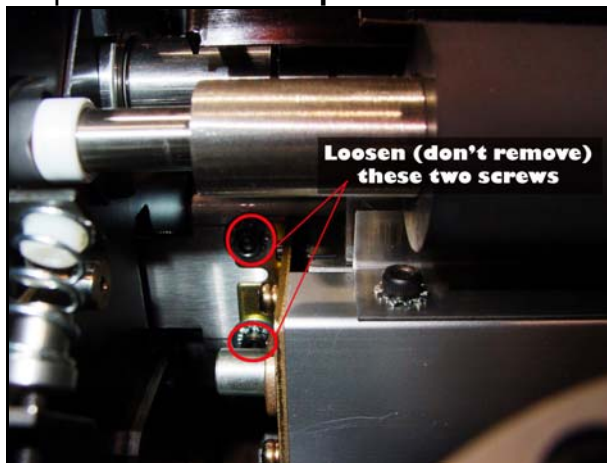


Figure 7 – Operator-Side Allen-head location

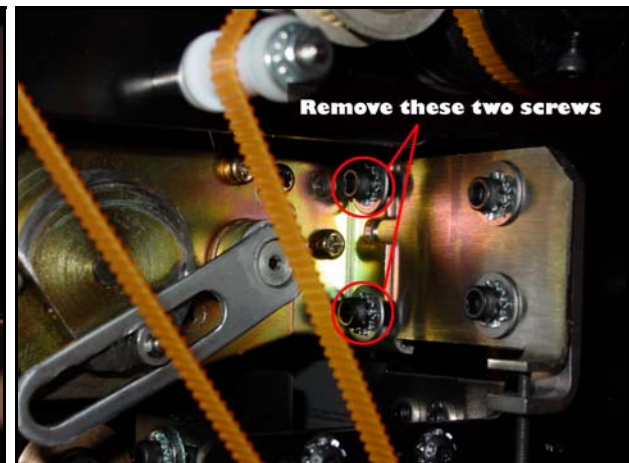


Figure 8 – Non-Operator Side Allen-head location

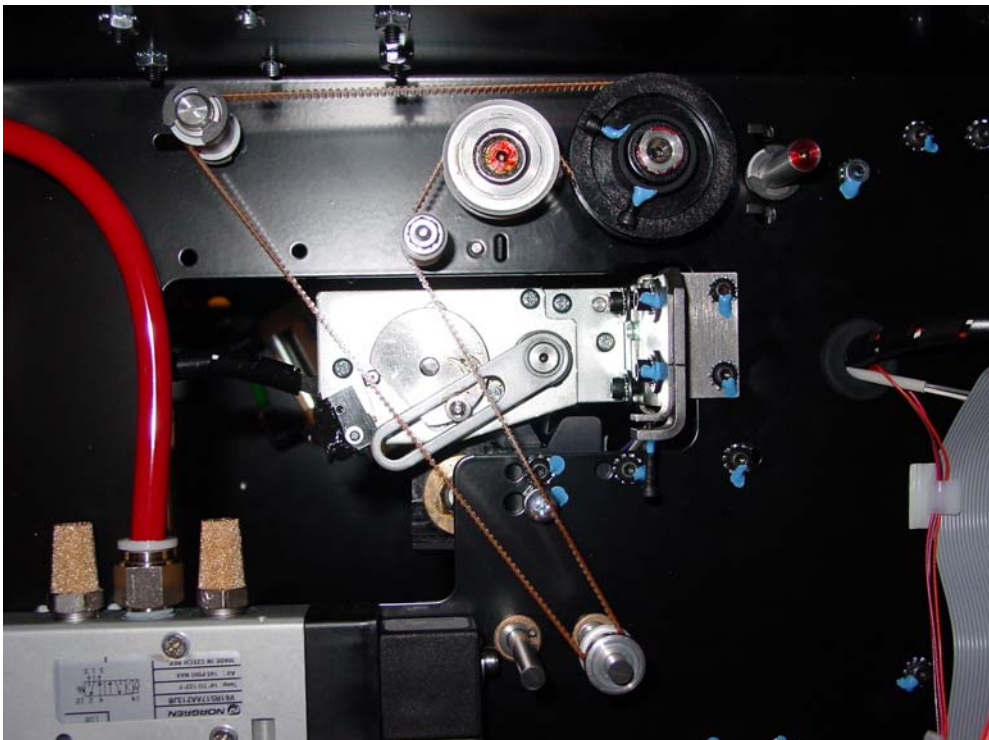
- From the top of the PlateStream, feed cutter power cable out of clips so it can be removed with the cutter.
- Slide the cutter to the non-operator side to disengage the cutter from the operator side Allen-head screws and remove the cutter from the platesetter.

#### **STEP 4 – INSTALLING THE NEW CUTTER**

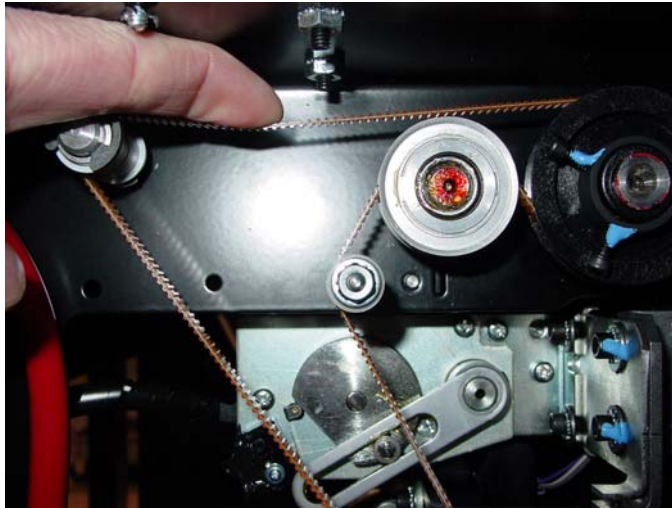
1. Install new cutter by sliding the operator side of the cutter into the already loosened fasteners, making sure you have the star and flat washers on the outside of the cutter.
2. From the rear of the platesetter, hold cutter in position while starting the two screws for the non-operator side.
3. Once the two non-operator side screws are started, slide the cutter all the way back towards the non-operator side for correct positioning and tighten all four screws.
4. Route cutter cabling through clips and plug cabling into the same place as it was disconnected from the Systems Board.
5. Turn platesetter on and from the operator panel; verify operational status of cutter by cycling cutter from the run hardware menu.

#### **STEP 5 – RE-INSTALL THE PINCH ROLLER AND TRACTION CONTROL BELT**

1. Re-install the pinch roller in the opposite order that it was removed. Make sure there is clearance between the roller and the top of the cutter guide.
2. Use the photo below to make sure the traction control belt is properly re-installed.



3. Set the tensioner on the traction control belt. Make sure to have enough tension, but do not pull it too tight. Recommended belt deflection is  $\pm 1/8$ ".



**Figure 9 – Traction Control Belt with Proper Tension**

4. Run Test plates to verify proper operation.

If there are any difficulties please call Printware Customer Service at  
1-800-456-1400 x2