

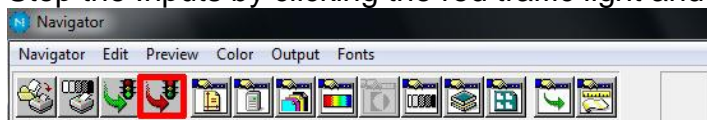
Printware

A DIVISION OF VANGUARD GRAPHICS INTERNATIONAL

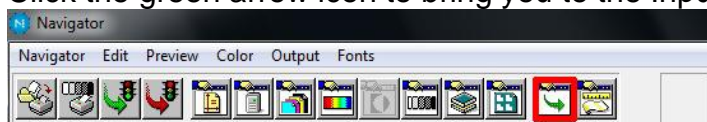
Sharing a Printer from a Windows 7 RIP

Tools/Parts Required: **Printware PlateStream Driver**
 Create all Page Setups in RIP
 Create all Input Channels to Spool Folders

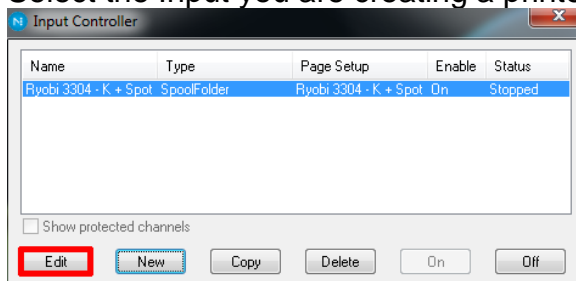
1. Stop the Inputs by clicking the red traffic light and arrow icon:



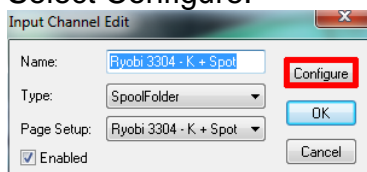
2. Click the green arrow icon to bring you to the Input Controllers:



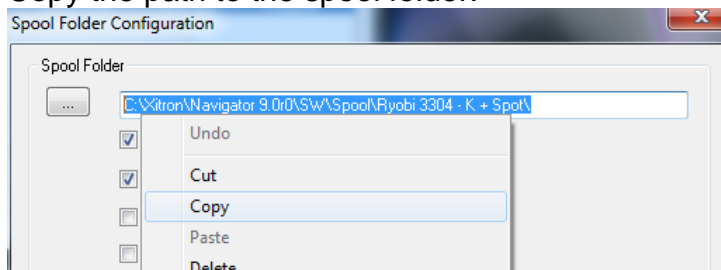
3. Select the Input you are creating a printer for & select edit:



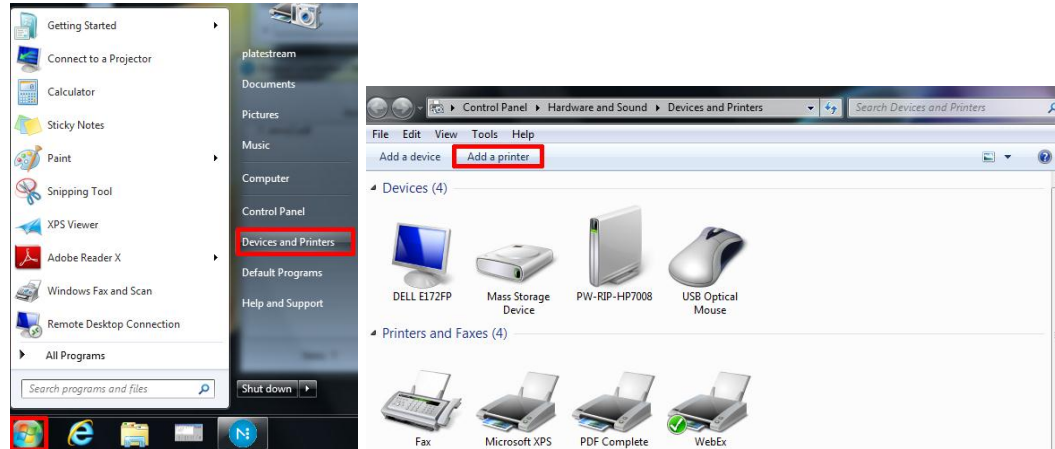
4. Select Configure:



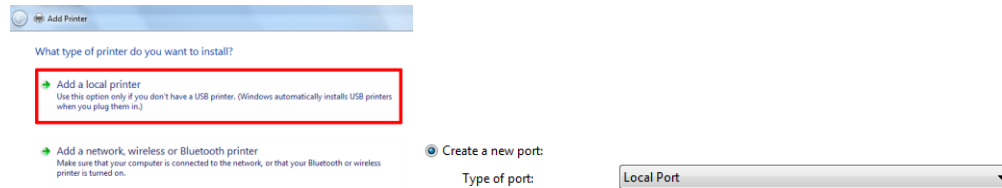
5. Copy the path to the spool folder:



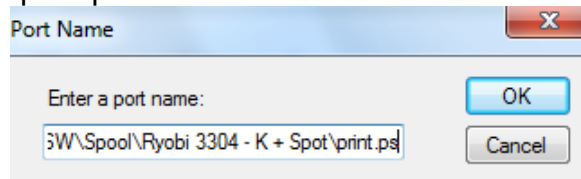
- Click the Windows Start button and select Devices & Printers and click the Add Printer button.



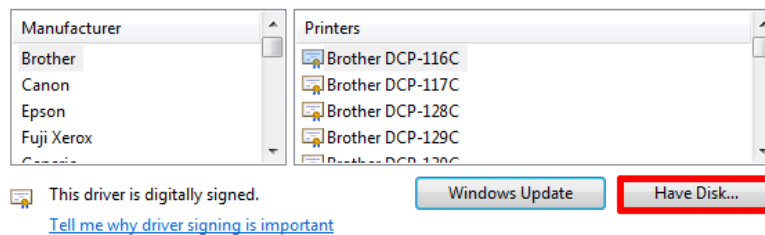
- Click Add a Local Printer and select Create a New Port:



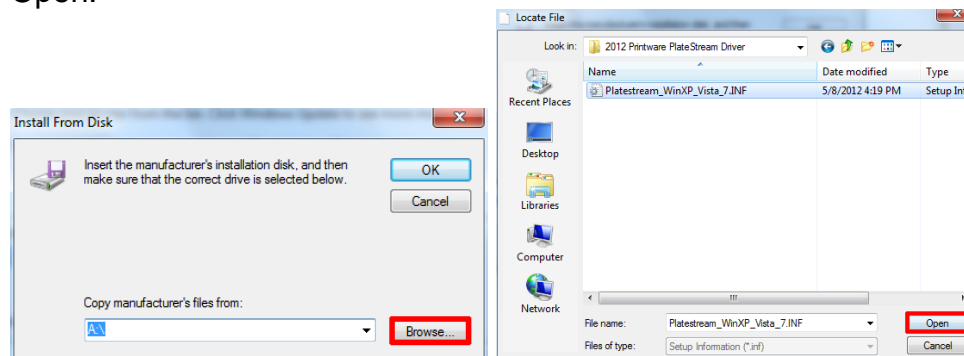
- Copy the spool folder path to the input into the Port Name and add "print.ps" at the end.



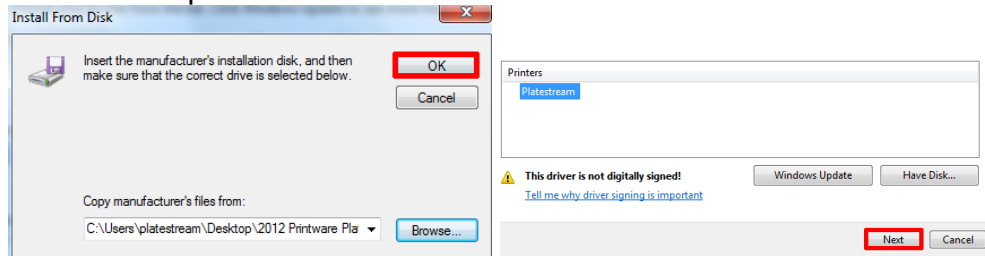
- Click the Have Disk at the Printer Driver window and select Next:



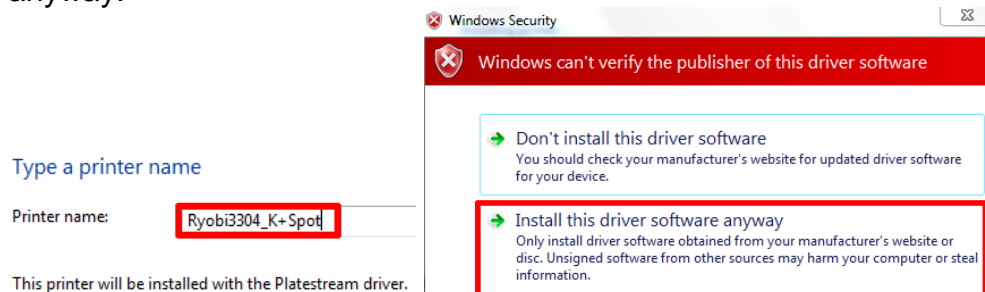
- Click the Browse button and select the PlateStream printer driver and Open:



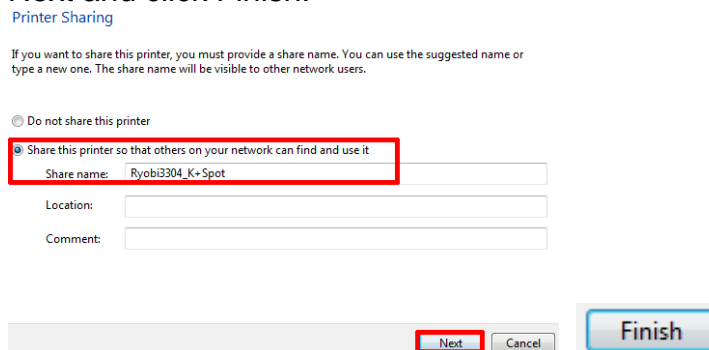
11. At the Install From Disk window, click OK. You will now see the Platestream printer. Click Next:



12. Type the printer name. Keep it same or similar to the name of the Page Setup and Input Channel. At the next window, choose to install the driver anyway:



13. Verify that everything looks correct at the Printer Sharing screen and click Next and click Finish:



14. These steps will need to be repeated to create a printer for each Input Channel.

NOTE: Unless you use the Page Feature called “Title2a_6”, every job that gets printed to the RIP will show up in the queue with the file name “print.ps”